

HP101-STD HAND PUMP

PART NUMBER 55100

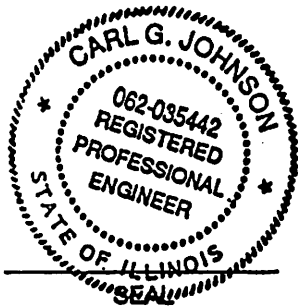
DESIGN AND OPERATIONAL FEATURES:

HAND OPERATED
 HIGH PRESSURE, TWO STAGE PUMPING SYSTEM
 NON-TOXIC MINERAL BASED HYDRAULIC OIL

HAND PUMP PERFORMANCE CHARACTERISTICS:

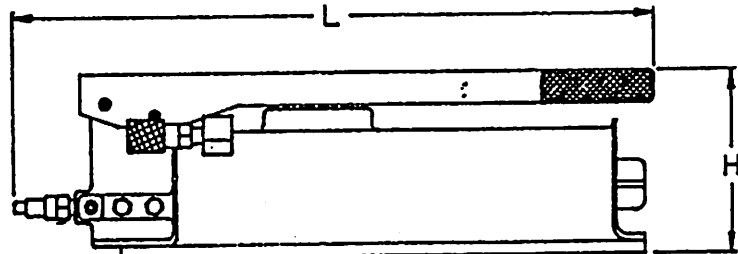
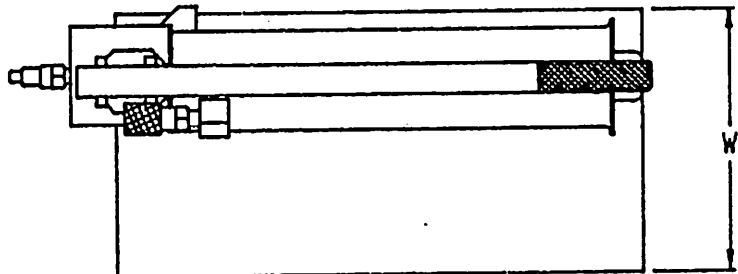
PARAMETER

| | |
|------------------------------|--------------------|
| WEIGHT : | 29.5 lb. |
| LENGTH (L) : | 26.0 in. |
| WIDTH (W) : | 10.5 in. |
| HEIGHT (H) : | 7.5 in. |
| MAXIMUM OPERATING PRESSURE : | 10,500 psi |
| CAPACITY OF OIL RESERVOIR : | 0.6 gal. U.S. |
| DELIVERY OF PUMP, STAGE 1 : | 0.65 cu.in./stroke |
| DELIVERY OF PUMP, STAGE 2 : | 0.16 cu.in./stroke |



Carl G. Johnson
 CARL G. JOHNSON

August 28, 1990
 DATE



| | | |
|---|---------------------------------------|---------------------|
| AMKUS, Inc. 4728 YENDER AVENUE, LISLE, IL 60532 | | REV. 0 |
| SCALE : NOT-TO-SCALE | TITLE : MODEL HP101-STD HANDPUMP UNIT | |
| DATE : 8-27-90 | MATERIAL : VARIES | HEAT TREAT : VARIES |
| DRAWN BY : <i>Alan J. Painter</i> | APPROVED BY : <i>Carl G. Johnson</i> | DRAWING NUMBER |
| ALAN J. PAINTER | CARL G. JOHNSON | B980011A |