

AMK-20 CUTTER

PART NUMBER 49300

DESIGN AND OPERATIONAL FEATURES :

HYDRAULIC CUTTER TO SHEAR, CUT, SEPARATE, CLOSE, AND DISMANTLE RODS, BARS, COLUMNS, SUPPORTS, SHEETS, AND STRUCTURES.

LOCKING COUPLINGS : QUICK DISCONNECT DESIGN PREVENTS ACCIDENTAL HOSE SEPARATION .

CONTROL VALVE : DEADMAN'S DESIGN STOPS TOOL IF CONTROL IS RELEASED .

CHECK VALVE : INTERNAL DESIGN CAUSES TOOL TO MAINTAIN LOAD .

SPREADER PERFORMANCE CHARACTERISTICS : PARAMETER

WEIGHT (Including Oil and Hose Connections.) 29.0 lbs.

LENGTH (L) : 20.5 in.

WIDTH (W) : 9.0 in.

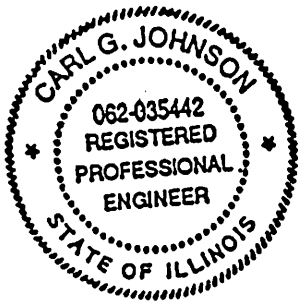
DEPTH (D) : 7.6 in.

MAXIMUM OPENING AT TIPS OF BLADES (O) : 4.1 in.

MAXIMUM OPENING AT CENTER OF BLADES (T) : 5.0 in.

CLOSING FORCE : 23,200 lbs.

(MEASURED AT MEDIUM BLADE OPENING)

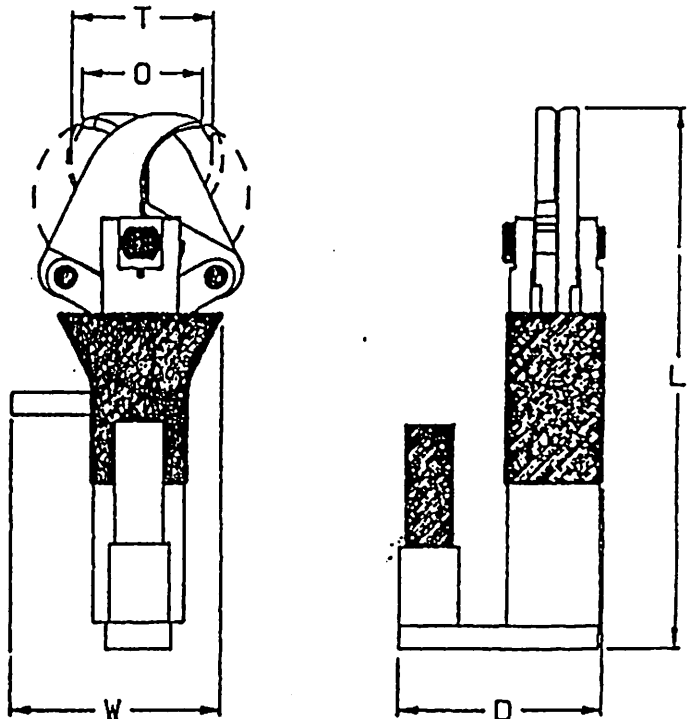


SEAL

Carl G. Johnson
CARL G. JOHNSON

9-11-90

DATE



AMKUS, Inc. 4728 YENDER AVENUE, LISLE, IL 60532		REV. 0
SCALE : NOT-TO-SCALE	TITLE : MODEL AMK-20 CUTTER	
DATE : 8-27-90	MATERIAL : VARIES	HEAT TREAT : VARIES
DRAWN BY : <i>Alan J. Painter</i>	APPROVED BY : <i>Carl G. Johnson</i>	DRAWING NUMBER
ALAN J. PAINTER	CARL G. JOHNSON	B980021A